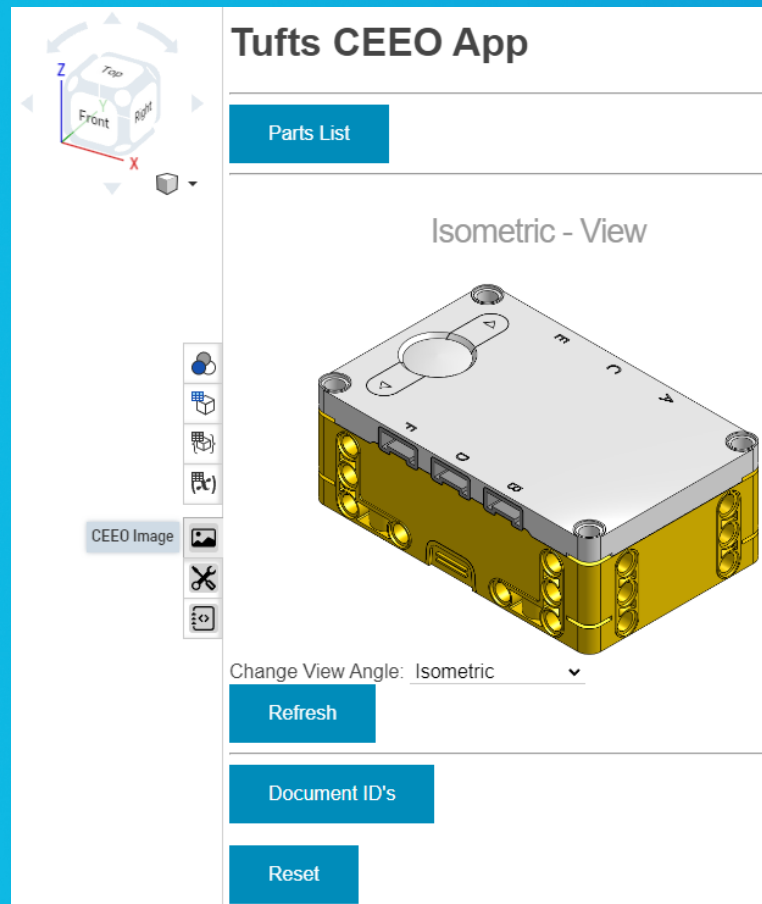
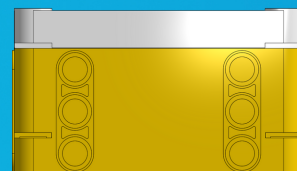
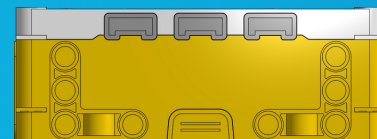
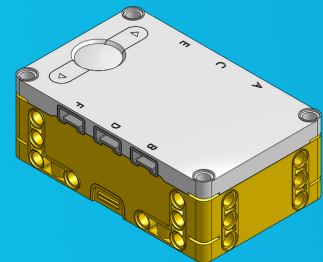


## Create Images of Part Studios



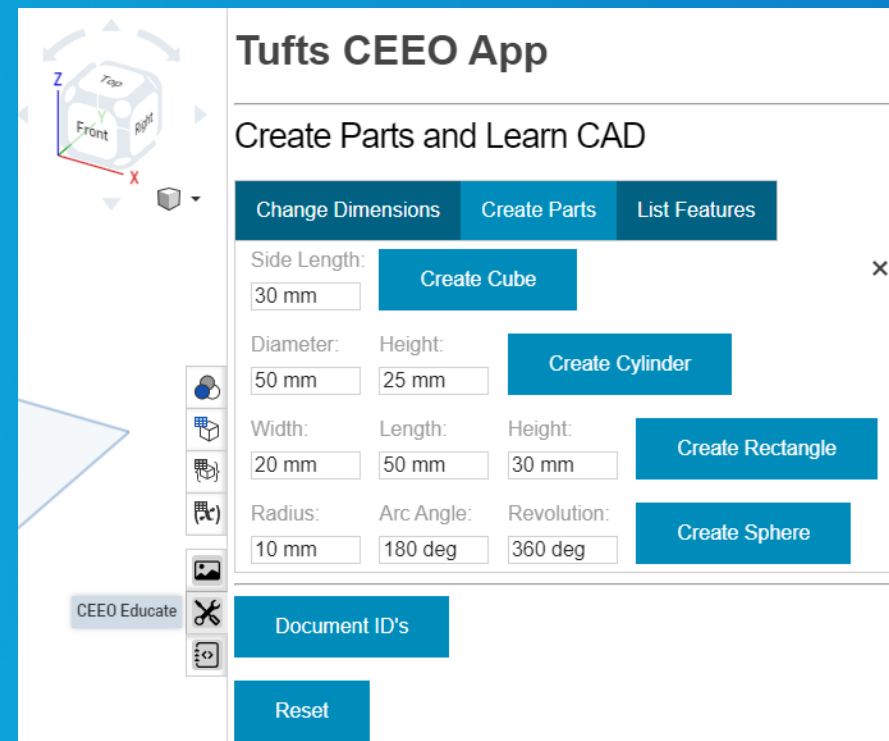
Example Images



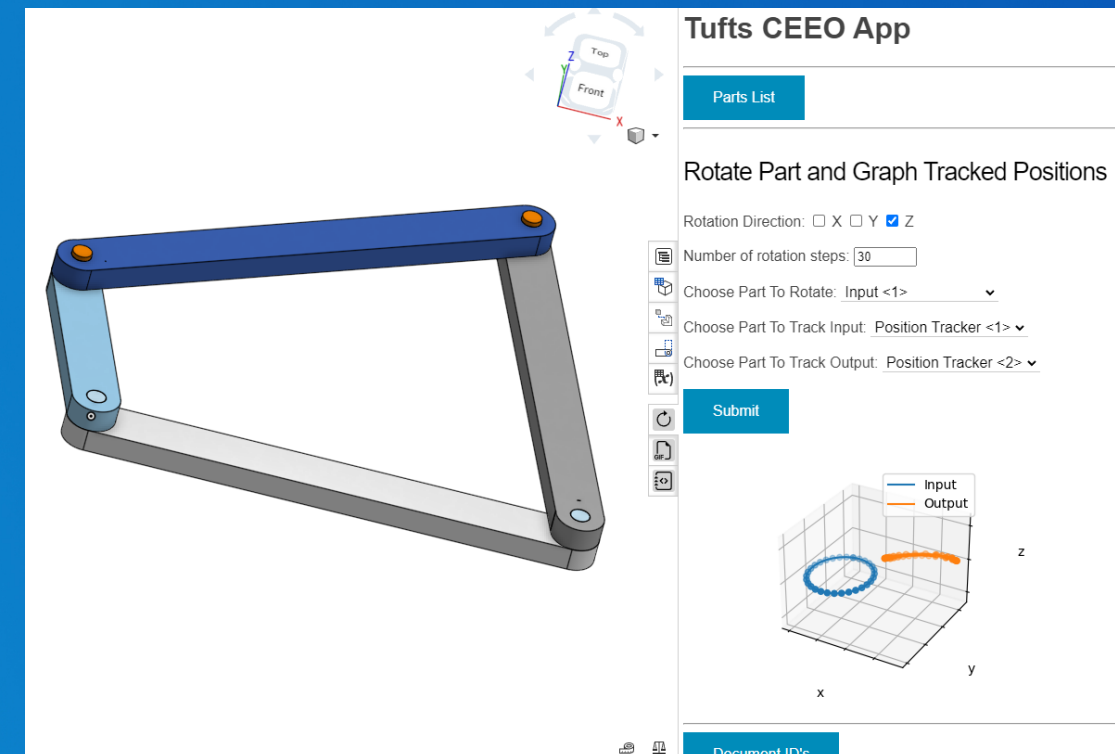
# Tools For Education From Tufts CEEO

The goal of this project is to test and develop new methods for teaching CAD to younger students by creating an Onshape extension and Flask server that interacts with Onshape's REST API

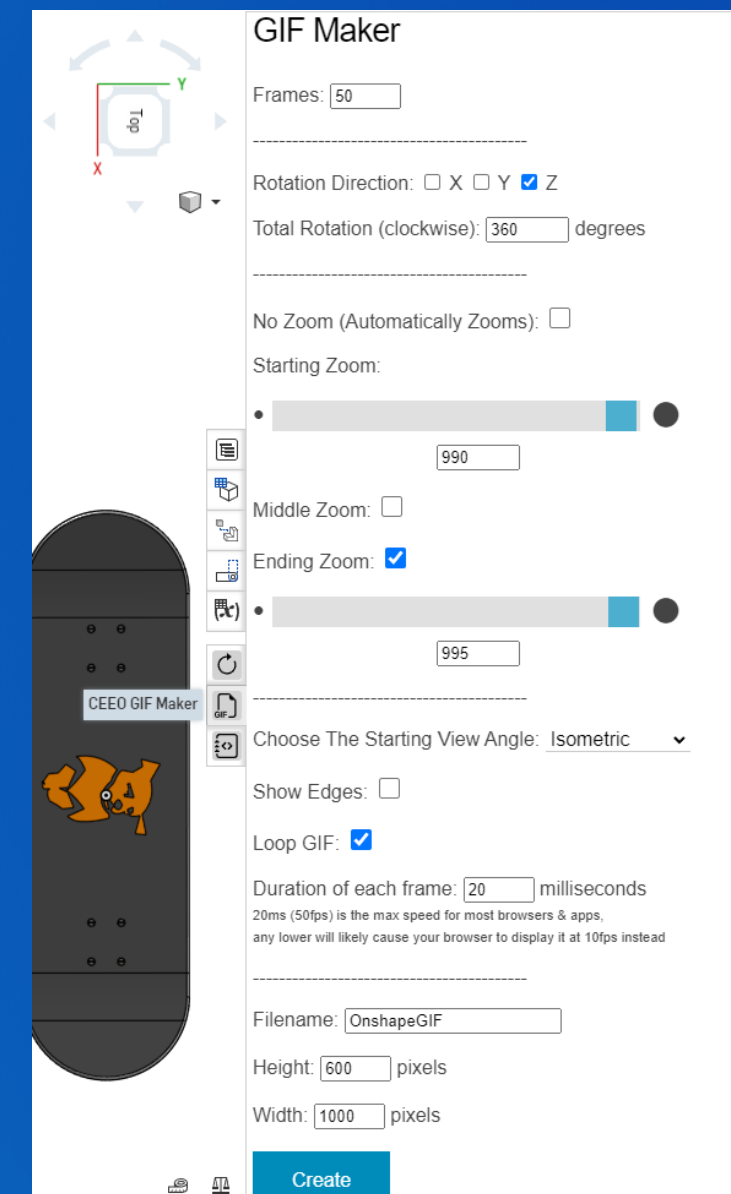
## Create Editable Features and Objects



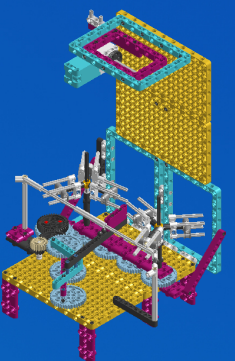
## Rotate and Graph Parts in Assemblies



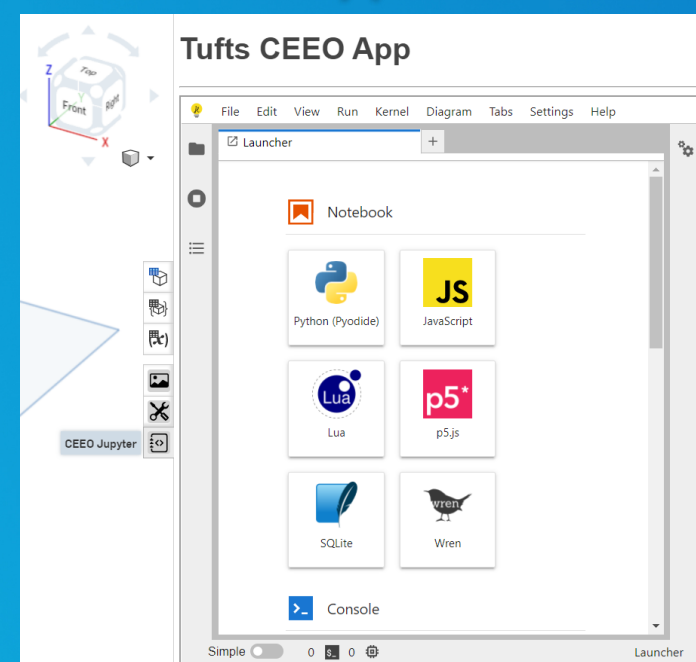
## Create GIFs of Assemblies



Example Images



## Run JupyterLite



All these tools run in Onshape and interact with the current document in real time! This allows the user create features (sketches & parts) that they can use as a starting place to learn CAD or document their creations.



onshape®

[Code Documentation](https://github.com/ceeoinnovations/OnshapeFlaskServer)

[Alexander Koppel](#)



<https://github.com/ceeoinnovations/OnshapeFlaskServer>

